

# Centon



# Nautilus

SERIES

20l  
capacity

## Blue Diamond

ELECTRIC STORAGE WATER HEATER



### Below Ceiling Installation

Easy installation, low cost maintenance, adjustable temperature



### High Precision Thermostat

Adjustable high heating temperature up to 75°



### CFC Free PUF Insulation

Environmentally friendly, complete protection against radiant heat loss



### Triple Power Input

Adjustable power and temperature according to seasonal usage



### Blue Diamond Enameled Tank

Ultimate protection against rust and corrosion



Export Excellence Awards 2019



### Super-alloy Heating Element

Extended life span



### Ready-to-use Indicators

Informs when hot water is available



### Single Welding Technology

Triple leak life span

Image for illustration purposes only. Actual installation may differ, please consult a certified plumber and obey all building regulations.



# Full Specifications



### Triple Power Input

Adjustable power and temperature according to seasonal usage.



### Ready-to-use Indicators

Viewable 'Ready' and 'Heating' indicators informing users when hot water is readily available.



### Blue Diamond Enameled Tank 2

The ultimate protection that provides several times the rust and corrosion resistance compared to standard inner tank designs.



### Single Welding Technology

Improved leak resistance thanks to minimal connecting joints, maximizing damage protection caused by high pressure.



### Super-alloy Heating Element 4

Incoloy 840 heating element that offers superior heating performance with extended lifespan and minimum energy losses.



### Energy Saving High Density Foam Insulation 3

CFC-free, environmental-friendly polyurethane (PUF) insulation design, with complete protection against radiant heat loss.



### Heavy Duty Anode Rod 5

Magnesium anode with steel core that protects the Blue Diamond Enameled Tank and heating element from rust and corrosion.



### Thermostat and Thermal Cut-off

Dual-layer protection against overheating and over-pressure.



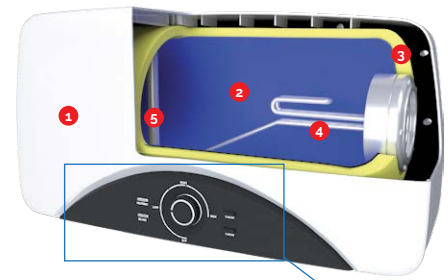
### High Strength and Durable Body Material 1

Made of SPCC or Cold Rolled Steel for excellent structural integrity and long service life.



### Whirlflow Technology Water Tubes

Smart water tubes system ensures no immediate direct contact between cold and hot water for maximum energy saving.



Cut Away



### Product Structure

- 6 Heating Indicator
- 7 Ready Indicator
- 8 Power Selector Button, 1000W
- 9 Power Selector Button, 1500W
- 10 Hot Water Outlet & Isolation Barrier
- 11 Cold Water Inlet, Isolation Barrier & Pressure Relief Valve
- 12 Temperature Control Knob

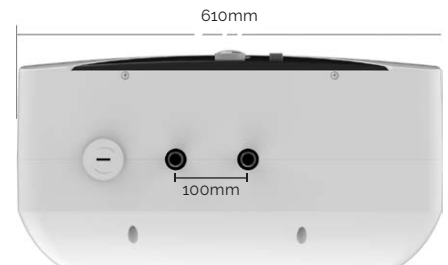
\* Both Power Selector Buttons can be activated simultaneously for total power output of 2500W

## Technical Reference Data

<b>Rated Volume</b>	20Litres	<b>Rated Voltage</b>	220-240V
<b>Rated Power</b>	2500W	<b>Rated Pressure</b>	0.8MPa
<b>Rated Water Temp.</b>	75°C	<b>Waterproofing</b>	IPX4
<b>Rated Frequency</b>	50Hz/60Hz	<b>Weight</b>	12.5kg   32.5kg (empty) (water-filled)



Side View



Bottom View

## e-Warranty System

Register & check for remaining warranty period ONLINE



Anti-Leak Tank



Other Electrical & Electronic Parts



## Distributed by

**CENTON HOME APPLIANCES SDN. BHD.** [1289180-P]

21, Jalan Seruling 58, Taman Klang Jaya,  
41200 Klang, Selangor, Malaysia

support@centon.my

www.centon.my

Specifications and products shown are correct at the time of printing and may be subject to changes without prior notice.

