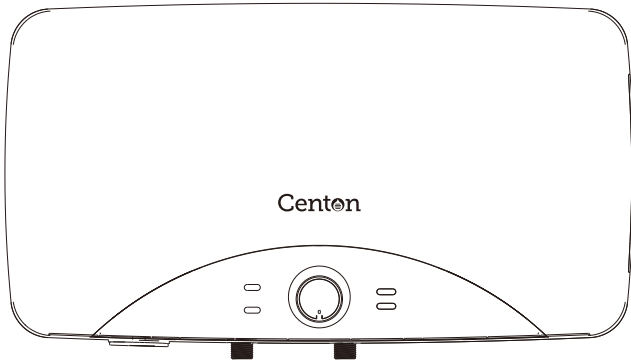


Centon

MINI TYPE ELECTRIC WATER HEATER USER MANUAL



Read This User Manual Carefully And Keep it Well For Future Reference.

CONTENTS

Security Characteristics.....	1
Correct Disposal Of This Product	2
The Operating Procedures.....	2
Technical Reference Data.....	3
Product Structure.....	3
Installation Instructions.....	4
Pipe Connection.....	6
Electrical Connection.....	7
Maintenance.....	8
Wiring Diagram.....	8
Troubleshooting Guide.....	9
Packing List.....	9

SECURITY CHARACTERISTICS

- Following warning sentences:
If the supply cord is damaged, it must be replaced by the manufacturer, its service agent or similarly qualified persons in order to avoid a hazard.
- The pressure-relief device is to be operated regularly to remove lime deposits and to verify that it is not blocked.
- **CAUTION:** In order to avoid a hazard due to inadvertent resetting of the thermal cut-out, this appliance must be not supplied through an external switching device, such as a timer, or connected to a circuit that is regularly switched on and off by the utility.
- This appliance is not intended for use by persons (including children) with reduced physical, sensory or mental capabilities, or lack of experience and knowledge, unless they have been given supervision or instruction concerning use of the appliance by a person responsible for their safety.

Children should be supervised to ensure that they do not play with the appliance.

- This electrical water heater must be installed with a mono-directional safety valve at the inlet pipe (blue indicator) when the tank's pressure is over 0.8 MPa, this will automatically activate the safety valve, water will exit at the drain pipe outlet (Diagram 1). In any condition, this outlet must not be blocked.
If there is a need to empty the water in the tank, first, close the mains water. Remove the fixed screw nail on the safety valve. lift up the plastic handle (see diagram 2) to let the water flow out naturally.
- The water may drip from the discharge pipe of the pressure-relief device.
- The pressure-relief device is to be operated regularly to remove lime deposits and to verify that it is not blocked.

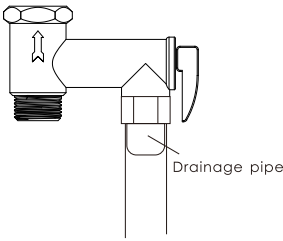


Diagram 1

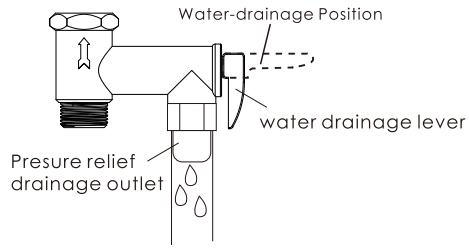


Diagram 2

CORRECT DISPOSAL OF THIS PRODUCT

- Appliance must be fixed with device compliance **IEC 61770**.

This symbol on the product, or in its packaging, indicates that this product may not be treated as household waste. Instead, it should be taken to the appropriate waste collection point for the recycling of electrical and electronic equipment. By ensuring this product is disposed of correctly, you will help prevent potential negative consequences for the environment and human health, which could otherwise be caused by the inappropriate waste handling of this product. For more detailed information about the recycling of this product, please contact your local council, your household waste disposal service, or the shop where you purchased the product.



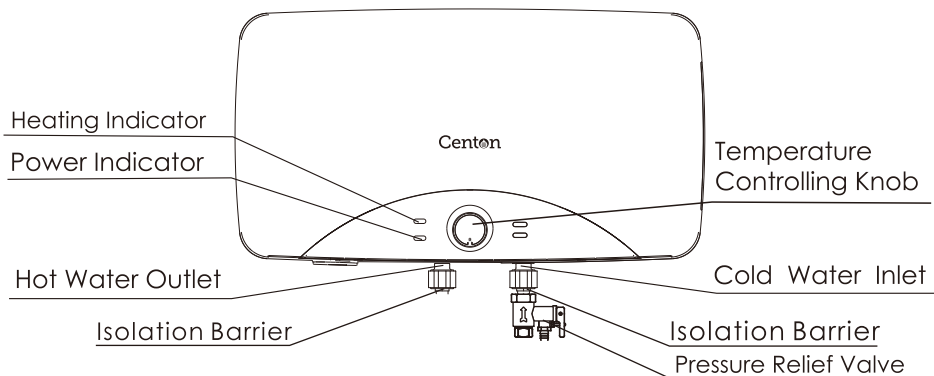
THE OPERATING PROCEDURES

- Check all the piping connection for leakage before turning on the electric power of the heater.
- Make sure that the tank is fully filled up with water, otherwise it will cause the heating elements to be damaged.
- Turn on the mains electrical power supply and then adjust the temperature knob clockwise for higher temperature and anti-clockwise for lower temperature.
- The water heater needs to be turn on for a certain period of time to reach the acceptable temperature.
- During the heating process, it's normal to see a slight drip at the safety valve. Please do not cover up the safety valve outlet hole.
- Connect this outlet hole to a discharge pipe. Water may drip from the discharge pipe of the safety valve, therefore this pipe must be exposed to the atmosphere.
- The safety valve is to be operated regularly (preferably at least every six months) to remove lime deposit and to ensure that it is not blocked.
- Turn on the mix-water valve connected with electric water heater and rotate to water outlet pipe direction, pull the handle up, then turn on tap water valve, filling water into tank, it indicates the tank is fully filled with water when the water flow out from hot water outlet mouth continuously, then close the mix-water valve, check whether every connection joint is leaking or not

TECHNICAL REFERENCE DATA

Rated Volume	20L		
Rated Voltage	240V~	Rated Power	2500W
Rated Pressure	0.8MPa	Rated Frequency	50Hz
Rated Water Temperature	75°C	Heating Efficiency	>90%
Water-proof Degree	IPX4	Maximum Inlet Pressure	0.8MPa
Structure Mode	Hermetically closed typed water storage style		

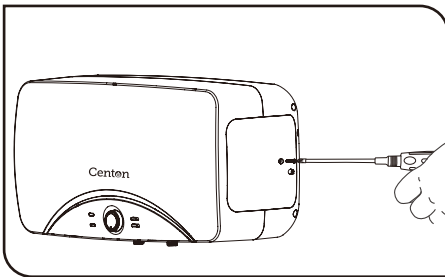
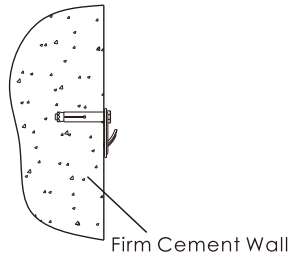
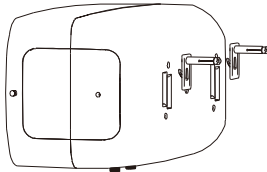
PRODUCT STRUCTURE



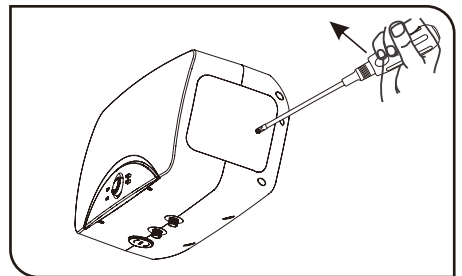
INSTALLATION INSTRUCTIONS

WARNING: the installation shall comply with GD/STNo.6/2016: Guideline for the design, installation, inspection, testing, operation and maintenance of water heater system by Energy Commission.

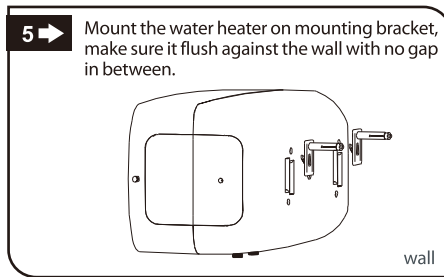
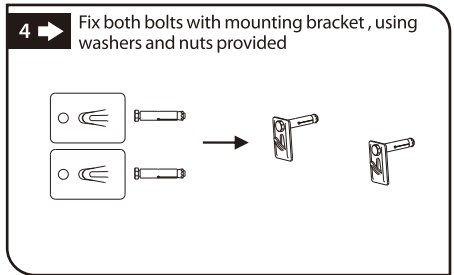
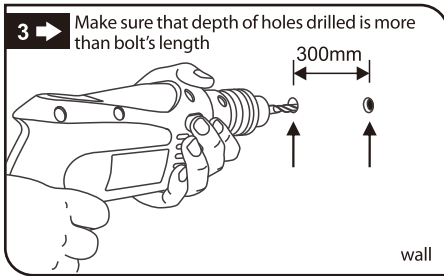
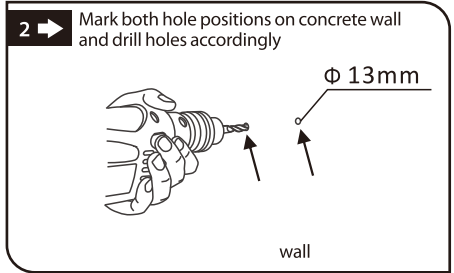
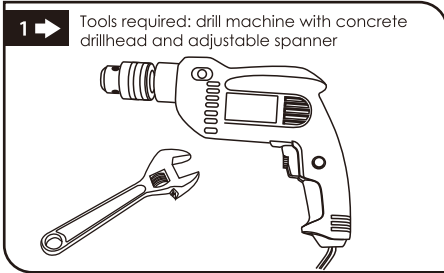
- The installation for electrical and plumbing work must be carried out by qualified personnel, according to the installation instructions and in compliance to the local authority regulations
- Unit has to be installed as near as possible to the service points, in order to reduce heat loss along the pipes. To facilitate maintenance, allow a distance of 50cm for easy access to the electrical parts.
- This electrical water heater should be mounted on a solid cement wall, preferably where it is close to the power source's sockets and water source.
- Please use our company's fitted accessories to mount this electric water heater.
- Before determining the bolt hole's position, you should ensure that the heater is more than 200mm from the ground or ceiling board. This will leave space for maintenance when necessary.
- Assembling method: After selecting the proper fixing positions, use the inflating bolt to secure the hanging board firmly, then hook the electric water heater.



Unfasten the screw from the maintenance cover.



Insert the screwdriver into the screw hole to form a lever, and then apply pressure according to the directional arrow shown above to pry open the maintenance cover.



PIPE CONNECTION

Warning: Non-conductive isolation barrier and pressure relief device shall be installed. The Pressure relief valve is a safety device that prevents excessive built-up of water pressure in the heater tank. It must not be removed or replaced.

- All piping parts are BSP ½". Wind some white tape at the thread sector of the inlet pipe (marked blue).
- Fix the pressure relief valve to the inlet pipe and then connect it to the cold water pipe of the mains.
- Install a water drainpipe to the safety valve to drain away water discharge.
- Install the drainpipe in a continuously downward direction and in a frost free environment.
- Connect the hot water pipe (marked red) to the outlet pipe.
- Do not over-tighten the safety valve and all pipes joint as it may cause damage to the joints.
- Make sure all pipes are clean before installing the taps and showers.

ELECTRICAL CONNECTION

WARNING:

Plug, socket and undersize cable shall not be used.

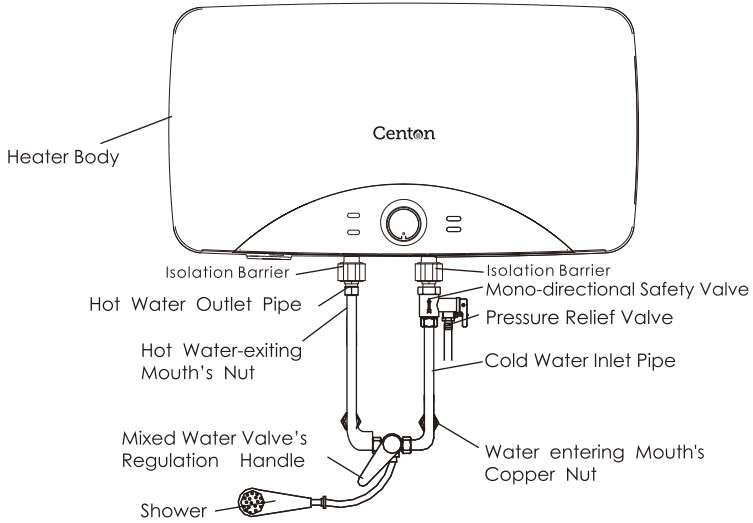
1) The heater must be permanently connected to the electricity supply through a double pole linked switch having a contact separation of at least 3mm in all poles incorporated in the circuit and out of reach from the person using the shower.

2) The appliance must be earthed.

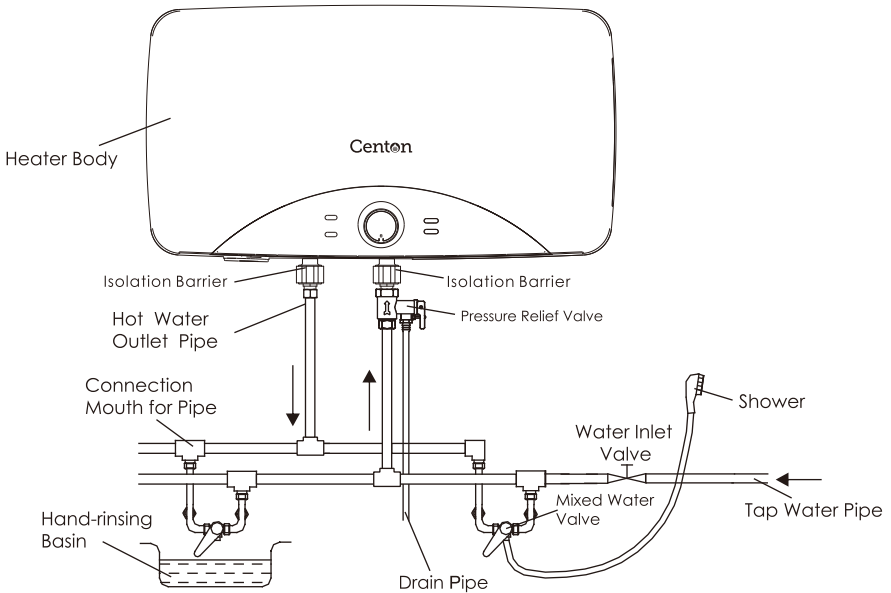
3) All wiring must conform to local regulations. If in doubt, please consult a qualified electrician. Typical connection are shown as in diagram below:

Note: all plumbing connections must be completed before making the electrical connections. Fill the tank with water and turn on the tap to let the water exiting out from the tank until all the air has been expelled out. Turn on electricity after water tank fully filled by water.

Single point Installation



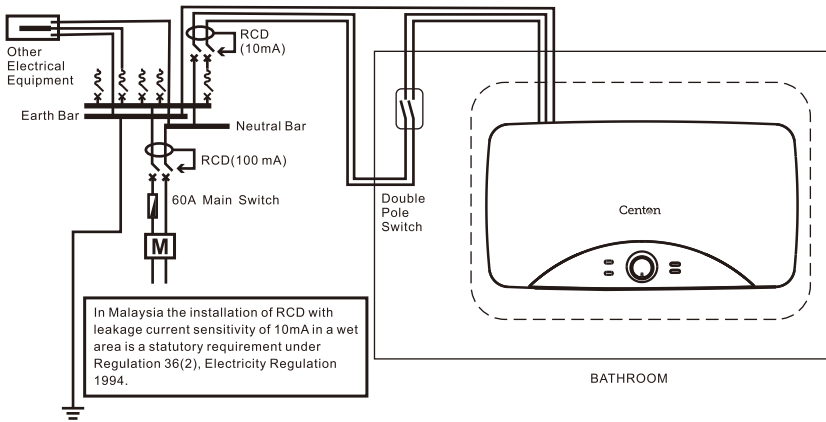
Multi Point Installation



MAINTENANCE

- All maintenance operation must be carried out by a qualified personnel.
- Before contacting the customer service, make sure the suspected failure is not caused by a temporary lack of water.
- To discharge the water completely from the tank, remove the safety valve from the water heater. Before removing the valve, the power of the heater need to be switched off for the tank to cool down (outlet connection must also be disconnected)

WIRING DIAGRAM



DO NOT USE UNDER SIZE CABLE. FOLLOWING TABLE PROVIDE AS REFERENCE FOR CABLE SELECTION

Voltage (V~)	Power (kW)	Current (A)	Recommended Conductor Size (csa)		Fuse/ MCB (A)	On/Off Switch (A)
			mm ²	Conduit Cable		
240	2.5	10.5	4.0	7/0.85mm	20	20

TROUBLESHOOTING GUIDE

Symptom	Cause	Solution
Indicator light does not light up.	<ol style="list-style-type: none"> 1. The power source not connected or badly connected. 2. Indicator damaged. 3. The overheating sensor activated. 	Get the professional technician to check the electrical wiring and indicators.
Water Temperature not warm enough.	<ol style="list-style-type: none"> 1. The element is defective 2. Temperature controller malfunction. 3. No power to water heater. 	<ol style="list-style-type: none"> 1. Replace the element 2. Call customer service for repair 3. Check power supply.
No water from the warm water tap.	<ol style="list-style-type: none"> 1. Main water valve not turn on. 	<ol style="list-style-type: none"> 2. Turn on the main water.
Water leakage	<ol style="list-style-type: none"> 1. Leaking from plumbing connection. 2. Leaking at gasket 	<ol style="list-style-type: none"> 1. Tighten the connection. 2. Tighten the element or replace the gasket.
Electrical mains tripped	<ol style="list-style-type: none"> 1. Element short circuit. 	<ol style="list-style-type: none"> 1. Replace element.

PACKING LIST

No.	Name	Unit(piece)
1	Electric Storage Water Heater with wire cord	1
2	User Manual	1
3	Bracket	2
4	Isolation Barrier	2
5	Pressure Relief Valve	1
6	Inflation Bolt	2