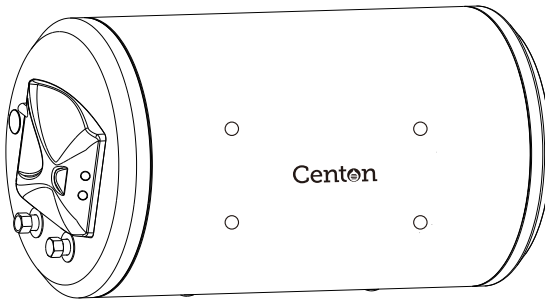


# Centon

## ELECTRIC STORAGE HEATER USER MANUAL



Read This User Manual Carefully And Keep it Well For Future Reference.

# CONTENTS

Security Characteristics.....	1
Technical Reference Data.....	2
Product Structure.....	3
Installation Instructions.....	3
Pipe Connection.....	5
Maintenance.....	6
Electrical Connection.....	6
Wiring Diagram.....	6
The Operating Procedures.....	8
The Product Features.....	8
Packing List.....	Back Cover
Troubleshooting Guide.....	Back Cover

## SECURITY CHARACTERISTICS

- Following warning sentences:  
If the supply cord is damaged, it must be replaced by the manufacturer, its service agent or similarly qualified persons in order to avoid a hazard.
- The pressure-relief device is to be operated regularly to remove lime deposits and to verify that it is not blocked.
- **CAUTION:** In order to avoid a hazard due to inadvertent resetting of the thermal cut-out, this appliance must be not supplied through an external switching device, such as a timer, or connected to a circuit that is regularly switched on and off by the utility.
- This appliance is not intended for use by persons (including children) with reduced physical, sensory or mental capabilities, or lack of experience and knowledge, unless they have been given supervision or instruction concerning use of the appliance by a person responsible for their safety.

Children should be supervised to ensure that they do not play with the appliance.

- This electrical water heater must be installed with a mono-directional safety valve at the inlet pipe (blue indicator) when the tank's pressure is over 0.8 MPa, this will automatically activate the safety valve, water will exit at the drain pipe outlet (Diagram 1). In any condition, this outlet must not be blocked.  
If there is a need to empty the water in the tank, first, close the mains water. Remove the fixed screw nail on the safety valve. Lift up the plastic handle (see diagram 2) to let the water flow out naturally.
- The water may drip from the discharge pipe of the pressure-relief device.
- The pressure-relief device is to be operated regularly to remove lime deposits and to verify that it is not blocked.

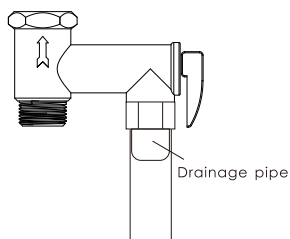


Diagram 1

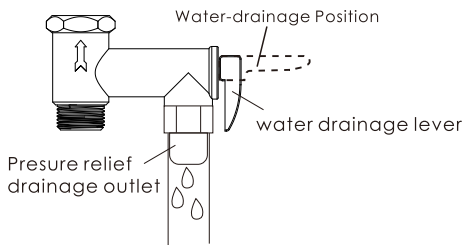
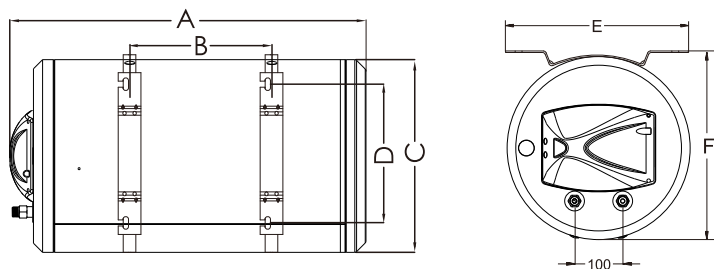


Diagram 2

## TECHNICAL REFERENCE DATA

Rated Voltage	240V~	Rated Power	3000W
Rated Volume	30L、40L、50L、60L、70L、80L、90L、100L		
Rated Frequency	50Hz	Rated Pressure	0.8MPa
Rated Water Temperature	75°C	Heating Efficiency	>90%
Water-proof Degree	IPX4	Maximum Inlet Pressure	0.8MPa
Structure Mode	Hermetically closed typed water storage style		



MODEL	A	B	C	D	E	F
Neptune 30L-H	505	165	ø380	210	265	min395
Neptune 40L-H	605	280	ø380	210	265	min395
Neptune 50L-H	705	280	ø380	210	265	min395
Neptune 60L-H	825	500	ø380	210	265	min395
Neptune 70L-H	935	500	ø380	210	265	min395
Neptune 80L-H	935	400	ø410	210	265	min435
Neptune 90L-H	1020	400	ø410	210	265	min435
Neptune 100L-H	1085	400	ø410	210	265	min435

## PRODUCT STRUCTURE

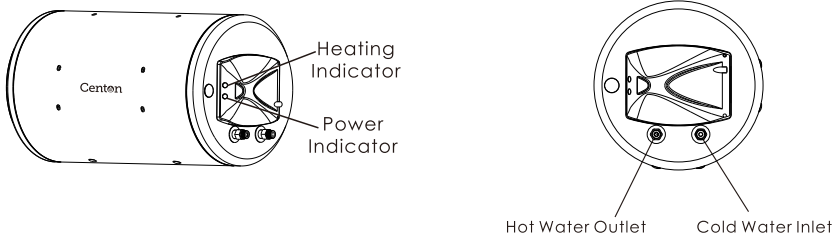


Diagram 3

## INSTALLATION INSTRUCTIONS

**WARNING:** the installation shall comply with GD/STNo.6/2016 for the design installation, inspection, testing, operation and maintenance of water heater system by Energy Commission.

- The installation for electrical and plumbing work must be carried out by qualified personnel, according to the installation instructions and in compliance to the local authority regulations
- Unit has to be installed as near as possible to the service points, in order to reduce heat loss along the pipes. To facilitate maintenance, allow a distance of 50cm for easy access to the electrical parts.
- This electrical water heater must be mounted on a solid cement wall, preferably where it is close to the power and water source. The concrete ceiling or wall must withstand 3 times weight of the water heater with water filled the tank.
- Please use our company's fitted accessories to mount this electric water heater.
- Before determining the bolt hole's position, you should ensure that the heater is more than 200mm from the ground or ceiling board. This will leave space for maintenance when necessary.
- Assembling method: After selecting the proper fixing positions, use the inflating bolt to secure the hanging board firmly, then hook the electric water heater. (Diagram 4)

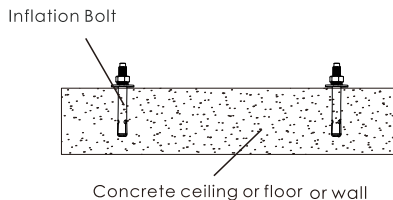
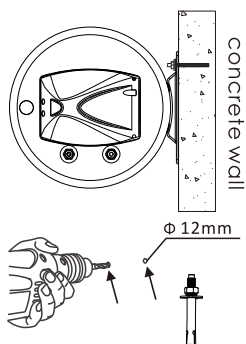
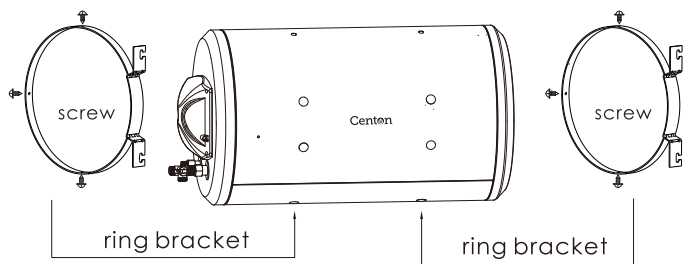
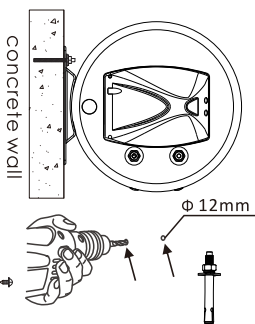
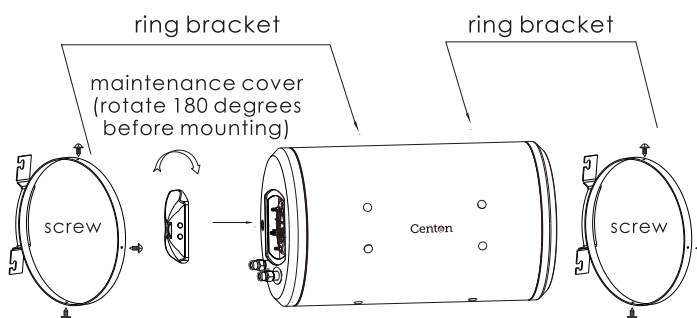


Diagram 4

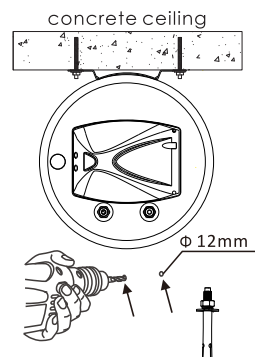
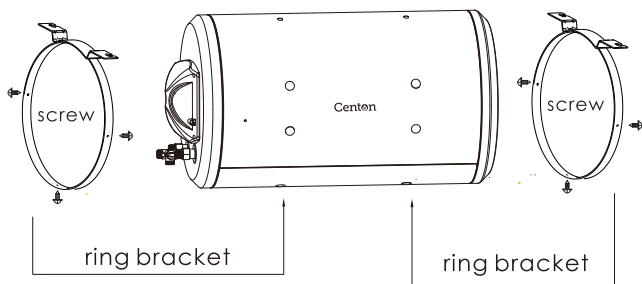
## RIGHT HAND SIDE MOUNTING(ON WALL)



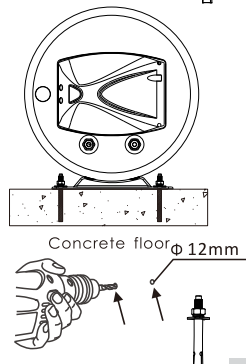
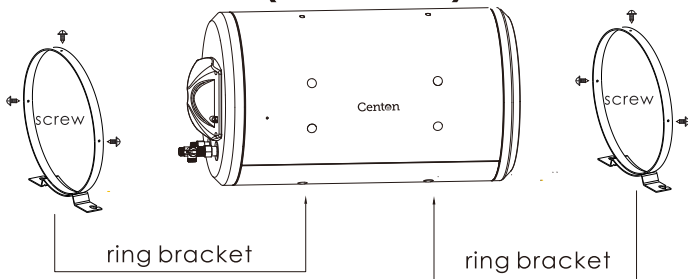
## LEFT HAND SIDE MOUNTING(ON WALL)



## TOP MOUNTING(ON CEILING)



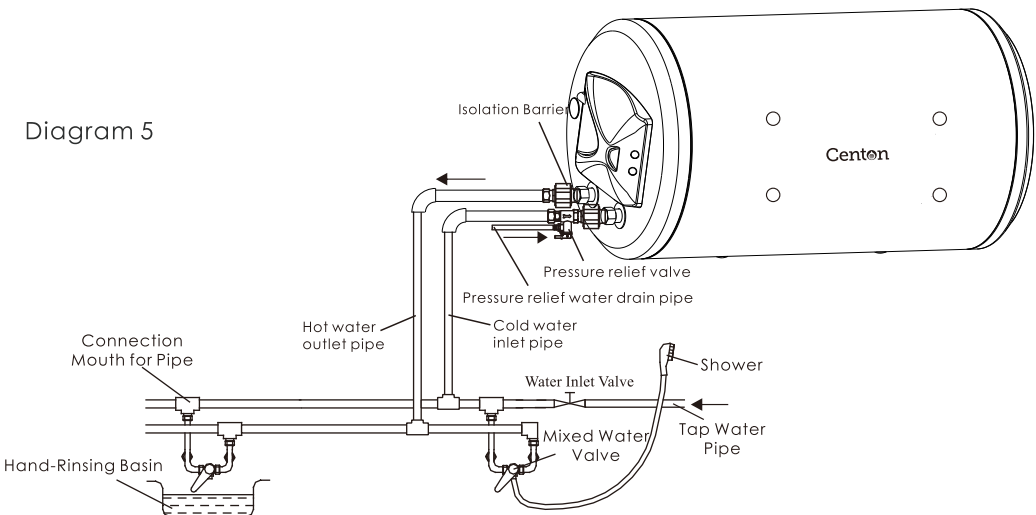
## TOP MOUNTING(ON FLOOR)



## PIPE CONNECTION

**Warning:** Non-conductive isolation barrier and pressure relief device shall be installed. The pressure relief valve is a safety device that prevents excessive built-up of water pressure in the heater tank. It must not be removed or replaced.

- All piping parts are BSP ½". Wind some white tape at the thread sector of the inlet pipe (marked blue).
- Fix the safety valve to the inlet pipe and then connect it to the cold water pipe of the mains.
- Install a water drain pipe to the safety valve to drain away water discharge. (drain pipe joint outlet – diagram 5).
- Install the drain pipe in a continuously downward direction and in a frost free environment.
- Connect the hot water pipe (marked red) to the outlet pipe.
- Do not over-tighten the safety valve and all pipes joint as it may cause damage to the joints.
- Make sure all pipes are clean before installing the taps and showers.



**Note:** Both the inlet and outlet are located at the end of the water heater.

**This model cannot be mounted in vertical.**

# MAINTENANCE

- All maintenance operation must be carried out by a qualified personnel.
- Before contacting the customer service, make sure the suspected failure is not caused by a temporary lack of water.
- To discharge the water completely from the tank, remove the safety valve from the water heater. Before removing the valve, the power of the heater need to be switched off for the tank to cool down (outlet connection must also be disconnected)

## ELECTRICAL CONNECTION

**WARNING:** Plug, socket and undersize cable shall not be used.

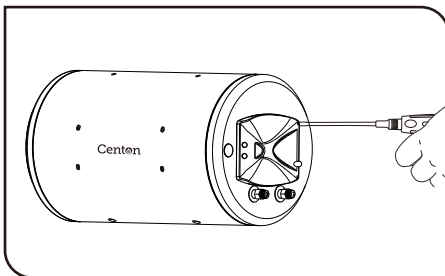
1) The heater must be permanently connected to the electricity supply through a double pole linked switch having a contact separation of at least 3mm in all poles incorporated in the circuit and out of reach from person using the shower.

2) The appliance must be earthed.

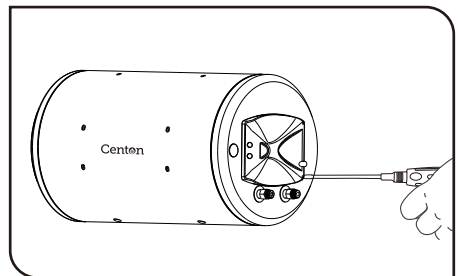
3) All wiring must conform to local regulations. If in doubt, please consult a qualified electrician. Typical connection are shown as in diagram below:

- The electrical connection must be done by a qualified electrician.
- The electrical supply is connected directly to the connector provided with the earth connection. The ground wire must be green/yellow in colour and attached to the terminal marked by the symbol. ⚡

**Note:** All plumbing connections must be completed before making the electrical connections. Fill the tank with water and turn on the tap to let the water exiting out from the tank until all the air has been expelled out.



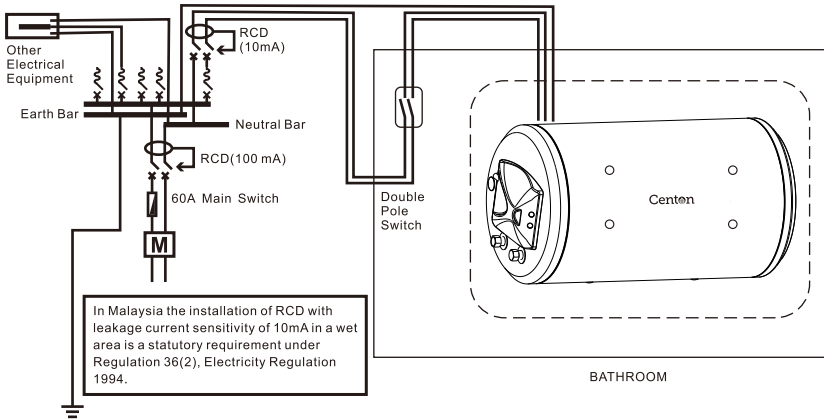
Unfasten the first screw from the maintenance cover.



Unfasten the second screw from the maintenance cover, then open the maintenance cover by hand.



# WIRING DIAGRAM



**DO NOT USE UNDER SIZE CABLE. FOLLOWING TABLE PROVIDE AS REFERENCE FOR CABLE SELECTION**

Voltage (V~)	Power (kW)	Current (A)	Recommended Conductor Size (csa)			Fuse/ MCB (A)	On/Off Switch (A)
			mm <sup>2</sup>	Conduit Cable	Flexible Cable		
240	3.0	12.5	4.0	7/0.85mm	56/0.30	20	20

## THE OPERATING PROCEDURES

- Check all the piping connection for leakage before turning on the electric power of the heater.
- Make sure that the tank is fully filled up with water, otherwise it will cause the heating elements to be damaged.
- Turn on the mains electrical power supply and then adjust the temperature knob clockwise for higher temperature and anti-clockwise for lower temperature.
- The water heater needs to be turn on for a certain period of time to reach the acceptable temperature.
- During the heating process, it's normal to see a slight drip at the safety valve. Please do not cover up the safety valve outlet hole.
- Connect this outlet hole to a discharge pipe. Water may drip from the discharge pipe of the safety valve, therefore this pipe must be exposed to the atmosphere.
- The safety valve is to be operated regularly (preferably at least every six months) to remove lime deposit and to ensure that it is not blocked.

## THE PRODUCT FEATURES

- Unique Profile
- Sapphire golden silicon tank which is rust-proof, erosion-proof and with higher efficiency and having a longer life span.
- Energy saving with minimum heat loss. The water temperature is able to be maintained up to 48 hours after the electricity is switched off.
- Rated power heating: 3000W.

PARAMETER	WEIGHT OF WATER HEATER (kg)							
	30	40	50	60	70	80	90	100
Capacity (L)								
-Empty	12.5	14.6	16.3	18.9	21.4	23	25.4	27.0
-Water Filled	42.5	54.6	66.3	78.9	91.4	103	115.4	127.0

## PACKING LIST

No.	Name	Unit(piece)
1	Electric Storage Heater	1
2	User Manual	1
3	Inflation Bolt	4
4	Pressure Relief Valve	1
5	Ring Bracket	2
6	Isolation Barrier	2
7	Screw	6

## TROUBLESHOOTING GUIDE

Symptom	Cause	Solution
Indicator light does not light up.	<ol style="list-style-type: none"> <li>1. The power source not connected or badly connected.</li> <li>2. Indicator damaged.</li> <li>3. The overheating sensor activated.</li> </ol>	Get the professional technician to check the electrical wiring and indicators.
Water Temperature not warm enough.	<ol style="list-style-type: none"> <li>1. The element is defective</li> <li>2. Temperature controller mal-function.</li> <li>3. No power to water heater.</li> </ol>	<ol style="list-style-type: none"> <li>1. Replace the element</li> <li>2. Call customer service for repair</li> <li>3. Check power supply.</li> </ol>
No water from the warm water tap.	<ol style="list-style-type: none"> <li>1. Main water valve not turn on.</li> </ol>	<ol style="list-style-type: none"> <li>2. Turn on the main water.</li> </ol>
Water leakage	<ol style="list-style-type: none"> <li>1. Leaking from plumbing connection.</li> <li>2. Leaking at gasket</li> </ol>	<ol style="list-style-type: none"> <li>1. Tighten the connection.</li> <li>2. Tighten the element or replace the gasket.</li> </ol>
Electrical mains tripped	<ol style="list-style-type: none"> <li>1. Element short circuit.</li> </ol>	<ol style="list-style-type: none"> <li>1. Replace element.</li> </ol>